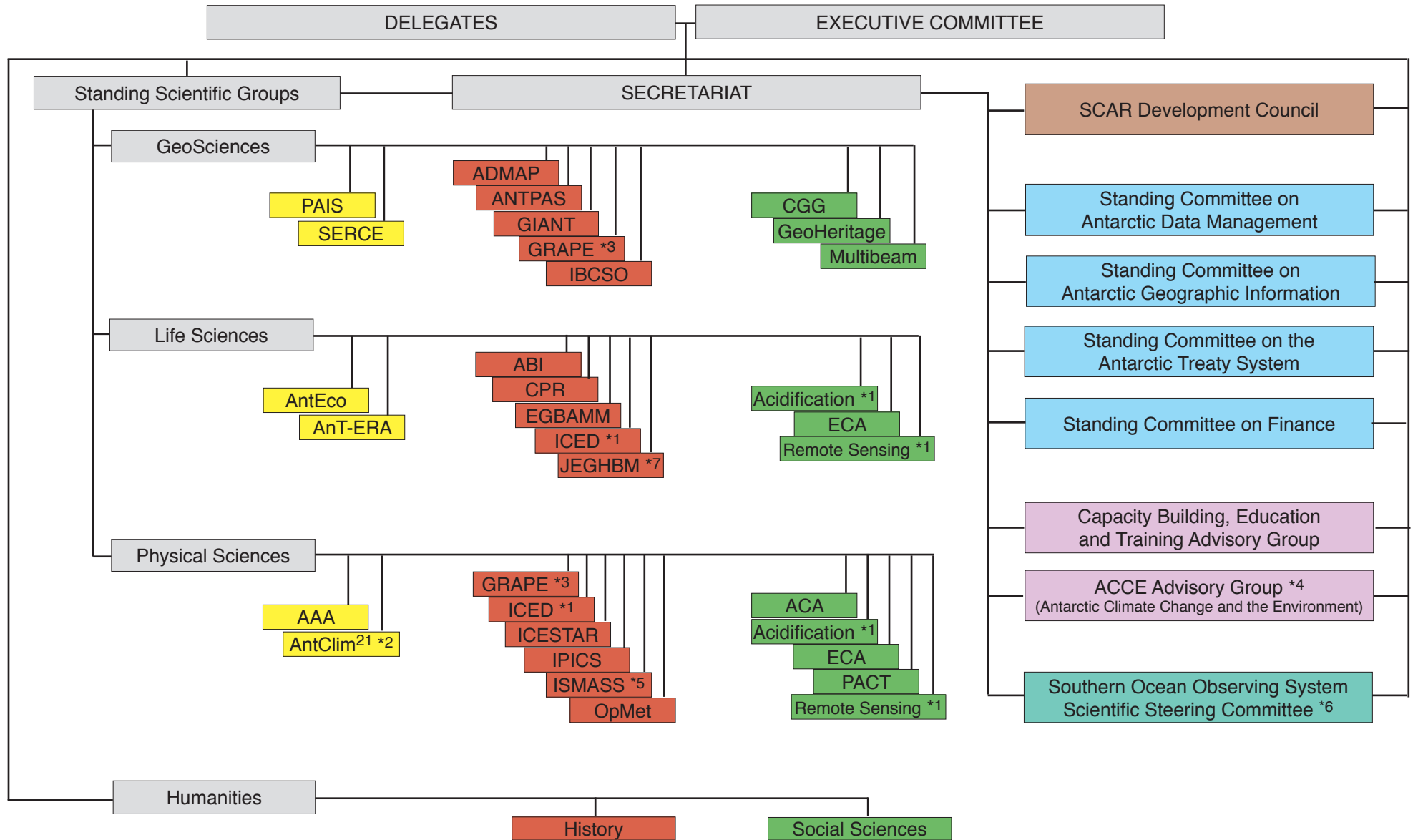


The Organisation of the Scientific Committee on Antarctic Research (SCAR) (May 2014)




*1 jointly sponsored by SSGs
 *2 incorporates ASPeCt and ITASE
 *3 incorporates GWSWF
 *4 incorporates PCPBEA
 *5 co-sponsored with IASC
 *6 joint initiative with SCOR & others
 *7 joint group with COMNAP



 Scientific Research
 Programme Group


 Expert Group


 Action Group


 Standing Committee


 Advisory Group


 Joint initiative with
 other organisations

Acronym Definitions

AAA	Astronomy and Astrophysics from Antarctica
ABI	Antarctic Biodiversity Informatics (incorporates AntaBIF and MarBIN)
ACA	Antarctic Clouds and Aerosols
ACCE	Antarctic Climate Change and the Environment Advisory Group (incorporates PCPBEA)
Acidification	Southern Ocean Acidification
ADMAP	Antarctic Digital Magnetic Anomaly Project
AGAFS	Action Group on Antarctic Fuel Spills (now part of ECA)
AntClim ²¹	Antarctic Climate Change in the 21 st Century (incorporates ASPeCt and ITASE)
AntEco	State of the Antarctic Ecosystem
AnT-ERA	Antarctic Thresholds – Ecosystem Resilience and Adaptation
ANTPAS	Antarctic Permafrost, Soils and Periglacial Environments
ASPeCt	Antarctic Sea Ice Processes and Climate (now part of AntClim ²¹)
ATHENA	Advancing TechNological and ENvironmental stewardship for subglacial exploration in Antarctica
BAMM/EGBAMM	(Expert Group on) Birds and Marine Mammals
CGG	Connecting Geophysics with Geology
CPR	Continuous Plankton Recorder
ECA	Environmental Contamination in Antarctica (incorporates AGAFS)
GeoHeritage	Geological Heritage and Conservation
GIANT	Geodetic Infrastructure of Antarctica
GRAPE / WSWF	GNSS Research and Application for Polar Environment and Weather and Space Weather Forecast (incorporates GWSWF)
GWSWF	GPS for Weather and Space Weather Forecasting (now part of GRAPE)
History	History Expert Group
IBCSO	International Bathymetric Chart of the Southern Ocean
ICED	Integrating Climate and Ecosystem Dynamics in the Southern Ocean
ICESTAR	Inter-hemispheric Conjugacy Effects in Solar-Terrestrial and Aeronomy Research
IPICS	International Partnership in Ice Core Sciences (supported by PAGES and IACS)
ISMAS	Ice Sheet Mass Balance and Sea Level (co-sponsored by IASC and CliC)
ITASE	International Trans-Antarctic Scientific Expedition (now part of AntClim ²¹)
JEGHBM	Joint Expert Group on Human Biology and Medicine (joint Expert Group with COMNAP)
Multibeam	Multibeam Bathymetric Data Acquisition
OpMet	Operational Meteorology in the Antarctic
PACT	Polar Atmospheric Chemistry at the Tropopause
PAIS	Past Antarctic Ice Sheet Dynamics
PCPBEA	Prediction of Changes in the Physical and Biological Environment of the Antarctic (now part of ACCE)
Remote Sensing	Remote Sensing methodology used to promote new research
SERCE	Solid Earth Response and influence on Cryosphere Evolution

Partner organisations:

CliC	Climate and Cryosphere Project of the WCRP (World Climate Research Programme)
COMNAP	Council of Managers of National Antarctic Programs
IACS	International Association of Cryospheric Sciences
IASC	International Arctic Science Committee
PAGES	Past Global Changes
SCOR	Scientific Committee on Oceanic Research