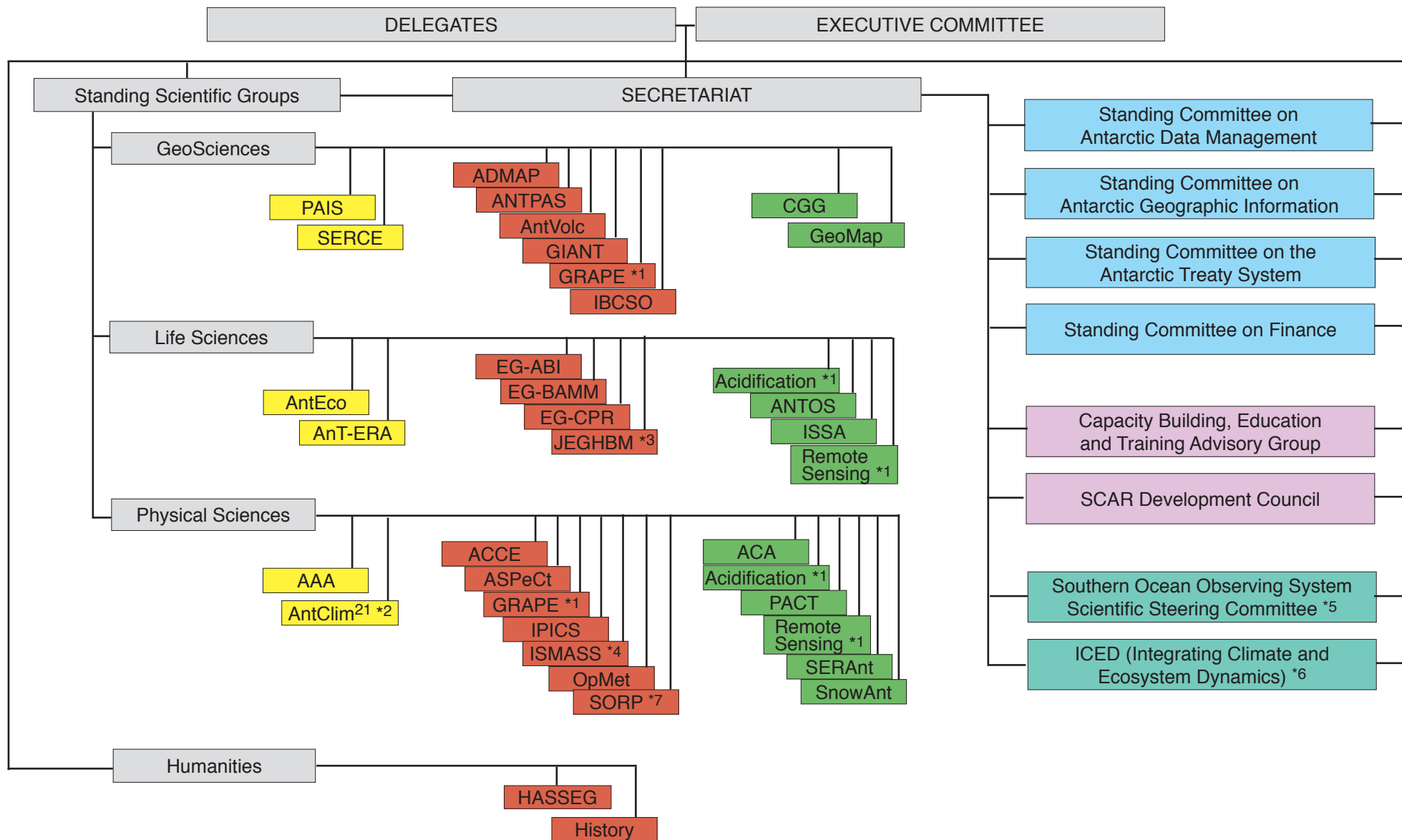


The Organisation of the Scientific Committee on Antarctic Research (SCAR) (June 2016)



*1 jointly sponsored by SSGs
 *2 incorporates ITASE
 *3 joint group with COMNAP
 *4 co-sponsored with IASC and CliC
 *5 joint initiative with SCOR & others
 *6 SCOR, IGBP and SCAR
 *7 CLIVAR, CliC and SCAR

					
Scientific Research Programme Group	Expert Group	Action Group	Standing Committee	Advisory Group	Joint initiative with other organisations

Acronym Definitions

AAA	Astronomy and Astrophysics from Antarctica
ACA	Antarctic Clouds and Aerosols
ACCE	Antarctic Climate Change and the Environment Advisory Group (incorporates PCPBEA)
Acidification	Southern Ocean Acidification
ADMAP	Antarctic Digital Magnetic Anomaly Project
AntClim ²¹	Antarctic Climate Change in the 21 st Century (incorporates ITASE)
AntEco	State of the Antarctic Ecosystem
AnT-ERA	Antarctic Thresholds - Ecosystem Resilience and Adaptation
ANTOS	Antarctic Near-shore and Terrestrial Observing System
ANTPAS	Antarctic Permafrost, Soils and Periglacial Environments
AntVolc	Antarctic Volcanism
ASPeCt	Antarctic Sea Ice Processes and Climate
CGG	Connecting Geophysics with Geology
EG-ABI	(Expert Group on) Antarctic Biodiversity Informatics (incorporates AntaBIF and MarBIN)
EG-BAMM	(Expert Group on) Birds and Marine Mammals
EG-CPR	(Expert Group on) the Continuous Plankton Recorder
GeoMap	Geological Mapping Update of Antarctica
GIANT	Geodetic Infrastructure of Antarctica
GRAPE	GNSS Research and Application for Polar Environment and weather and space weather forecast (incorporates GWSWF)
GWSWF	GPS for Weather and Space Weather Forecasting (now part of GRAPE)
HASSEG	Humanities and Social Sciences Expert Group
History	History Expert Group
IBCSO	International Bathymetric Chart of the Southern Ocean
ICED	Integrating Climate and Ecosystem Dynamics in the Southern Ocean
IPCS	International Partnership in Ice Core Sciences (supported by PAGES and IACS)
ISMASS	Ice Sheet Mass Balance and Sea Level (co-sponsored by IASC and CliC)
ISSA	Integrated Science for the Sub-Antarctic
ITASE	International Trans-Antarctic Scientific Expedition (now part of AntClim ²¹)
JEGHBM	Joint Expert Group on Human Biology and Medicine (joint Expert Group with COMNAP)
OpMet	Operational Meteorology in the Antarctic
PACT	Polar Atmospheric Chemistry at the Tropopause
PAIS	Past Antarctic Ice Sheet Dynamics
PCPBEA	Prediction of Changes in the Physical and Biological Environment of the Antarctic (now part of ACCE)
SERAnt	Sun-Earth Relationships and Antarctica
SERCE	Solid Earth Response and influence on Cryosphere Evolution
SnowAnt	Snow in Antarctica
SORP	Southern Ocean Regional Panel (CLIVAR/CliC/SCAR)

Partner organisations:

CliC	Climate and Cryosphere Project of the WCRP (World Climate Research Programme)
CLIVAR	Climate and Ocean - Variability, Predictability and Change Project of the WCRP (World Climate Research Programme)
COMNAP	Council of Managers of National Antarctic Programs
IACS	International Association of Cryospheric Sciences
IASC	International Arctic Science Committee
IGBP	International Geosphere/Biosphere Programme
PAGES	Past Global Changes
SCOR	Scientific Committee on Oceanic Research